

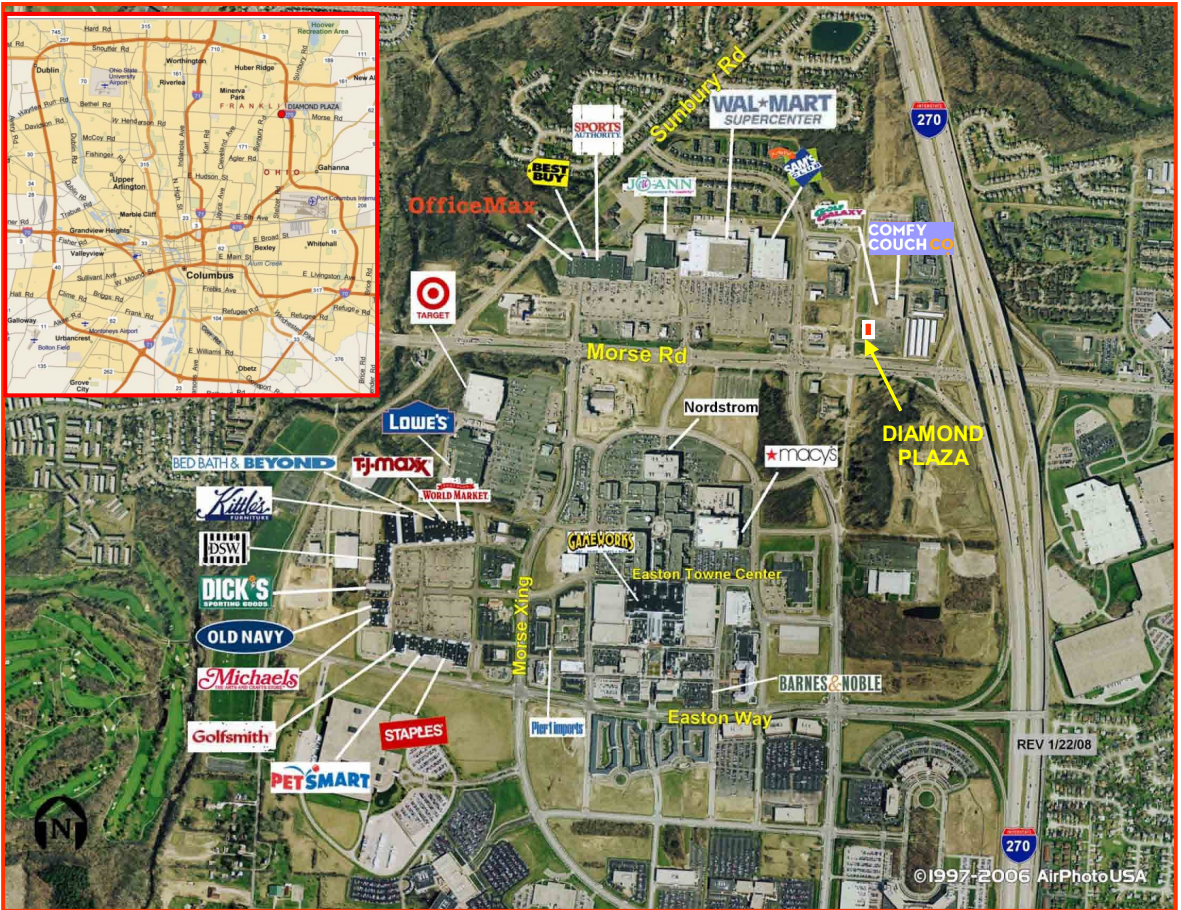
FOR LEASE

DIAMOND PLAZA

EASTON AREA - 5,000 SF

Across from new Whole Foods, REI
and COSTCO (under construction)

NEQ of Morse Road and Stelzer Road - Columbus, Ohio



CREA Inc.
Capitol Real Estate Advisors, Inc.
4016 TOWNFAIR WAY—SUITE 220 • COLUMBUS, OHIO 43219
614-944-5252
WWW.CAPITOLREA.COM

DEMOGRAPHICS	1 MILE			3 MILE			5 MILE				
	2007 Population Estimate	6,699	92,471	227,260	2007 Avg. HH Income	\$55,282	\$54,458	\$54,668	2007 Daytime Population	12,456	51,571

The information contained herein was obtained from sources. Capitol Real Estate Advisors, Inc. has not made an independent investigation of such information and makes no representations or warranties as to the accuracy of completeness thereof. The information is submitted subject to errors, omission, change of price, rental or other conditions prior to sale, lease or financing, and is subject to withdrawal without notice.